

FEASTERVILLE-TREVOSE, PA

4610 E STREET ROAD

±2,000 - 8,500 SF AVAILABLE FOR LEASE

PHILADELPHIA MSA

EXCELLENT VISIBILITY ALONG STREET RD (27,385 VPD)



get in touch.

SHANE HART

Office 215.282.0151

Direct 484.319.0744

shart@metrocommercial.com



metrocommercial.com | Plymouth Meeting, PA | Mount Laurel, NJ | Miami, FL | Philadelphia, PA

MARKET AERIAL



The information and images contained herein are from sources deemed reliable. However, Metro Commercial Real Estate, Inc. makes no representation whatsoever as to their accuracy or authenticity. Images shown may be modified for illustrative purposes. Images may be out-of-date and not current.

FEASTERVILLE-TREVOSE, PA
4610 E STREET ROAD



www.metrocommercial.com

ZONING: GENERAL COMMERCIAL (G-C)

BUCKS COUNTY
TECHNOLOGY PARK

STREET ROAD 27,385 VPD

±2,000 - 8,500 SF
AVAILABLE

PENNA
TURN-
PIKE

44,659 VPD

TOSCANA

Cadillac

VOLVO

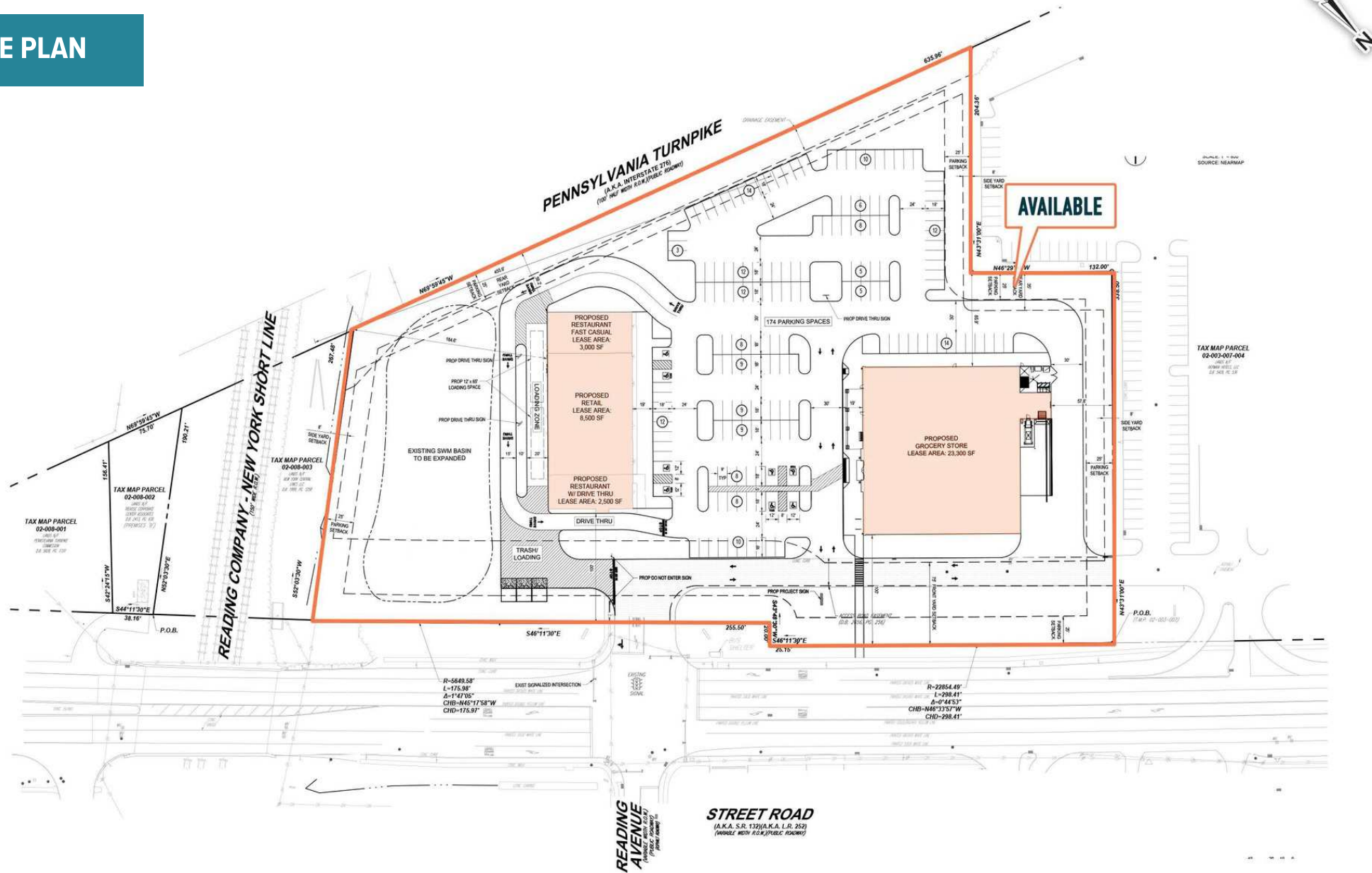
The information and images contained herein are from sources deemed reliable. However, Metro Commercial Real Estate, Inc. makes no representation whatsoever as to their accuracy or authenticity. Images shown may be modified for illustrative purposes. Images may be out-of-date and not current.

FEASTERVILLE-TREVOSE, PA
4610 E STREET ROAD



www.metrocommercial.com

SITE PLAN



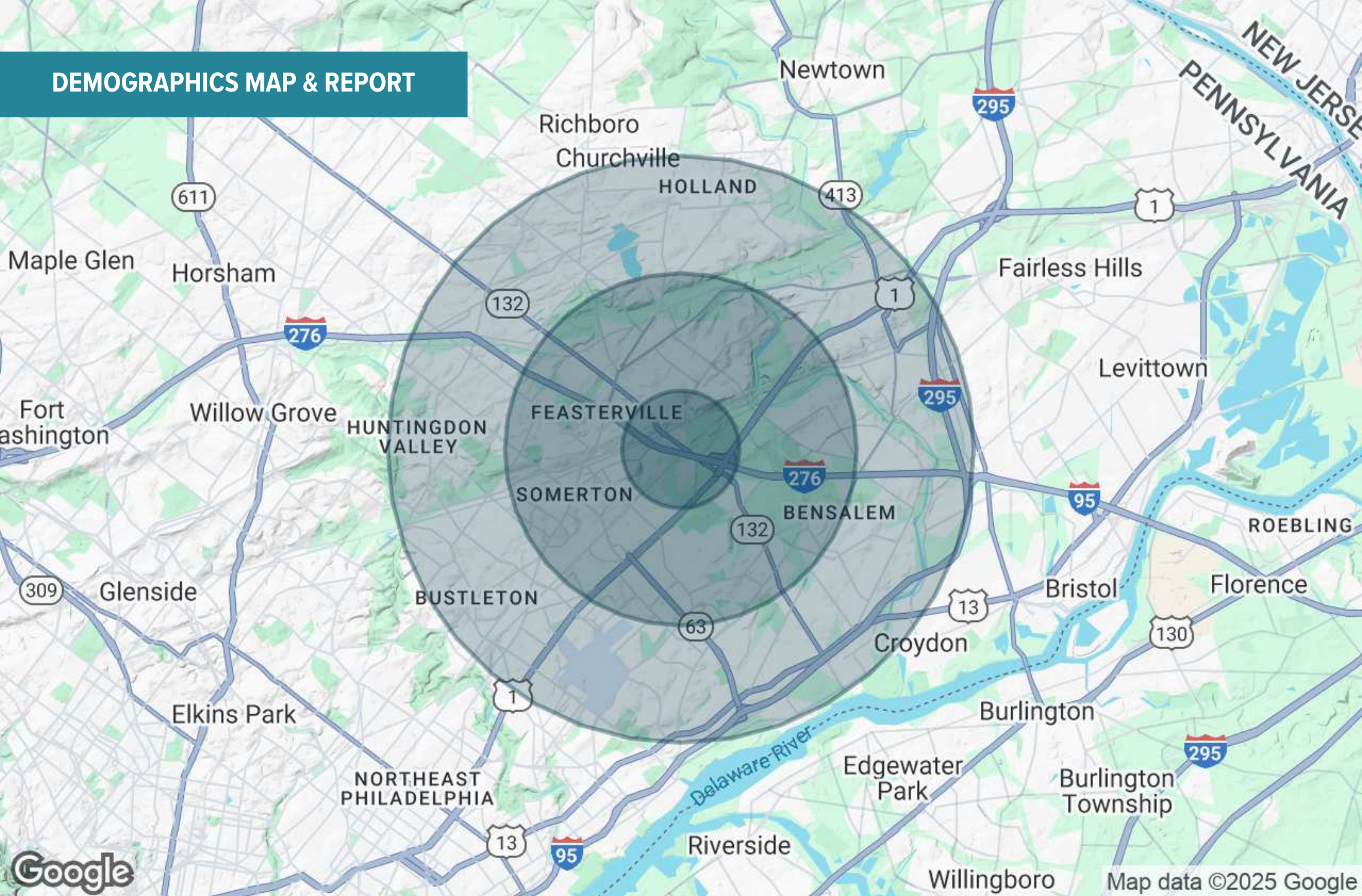
The information and images contained herein are from sources deemed reliable. However, Metro Commercial Real Estate, Inc. makes no representation whatsoever as to their accuracy or authenticity. Images shown may be modified for illustrative purposes. Images may be out-of-date and not current.

FEASTERVILLE-TREVOSE, PA
4610 E STREET ROAD



www.metrocommercial.com

DEMOGRAPHICS MAP & REPORT



The information and images contained herein are from sources deemed reliable. However, Metro Commercial Real Estate, Inc. makes no representation whatsoever as to their accuracy or authenticity. Images shown may be modified for illustrative purposes. Images may be out-of-date and not current.

FEASTERVILLE-TREVOSE, PA
4610 E STREET ROAD



www.metrocommercial.com

DEMOGRAPHICS MAP & REPORT

POPULATION	1 MILE	3 MILES	5 MILES
Total Population	8,940	102,173	257,263
Average Age	42	43	43
Average Age (Male)	41	42	42
Average Age (Female)	43	44	44
HOUSEHOLDS & INCOME	1 MILE	3 MILES	5 MILES
Total Households	3,378	39,058	97,843
# of Persons per HH	2.6	2.6	2.6
Average HH Income	\$108,286	\$107,542	\$117,592
Average House Value	\$388,013	\$378,142	\$398,160

Demographics data derived from AlphaMap

The information and images contained herein are from sources deemed reliable. However, Metro Commercial Real Estate, Inc. makes no representation whatsoever as to their accuracy or authenticity. Images shown may be modified for illustrative purposes. Images may be out-of-date and not current.